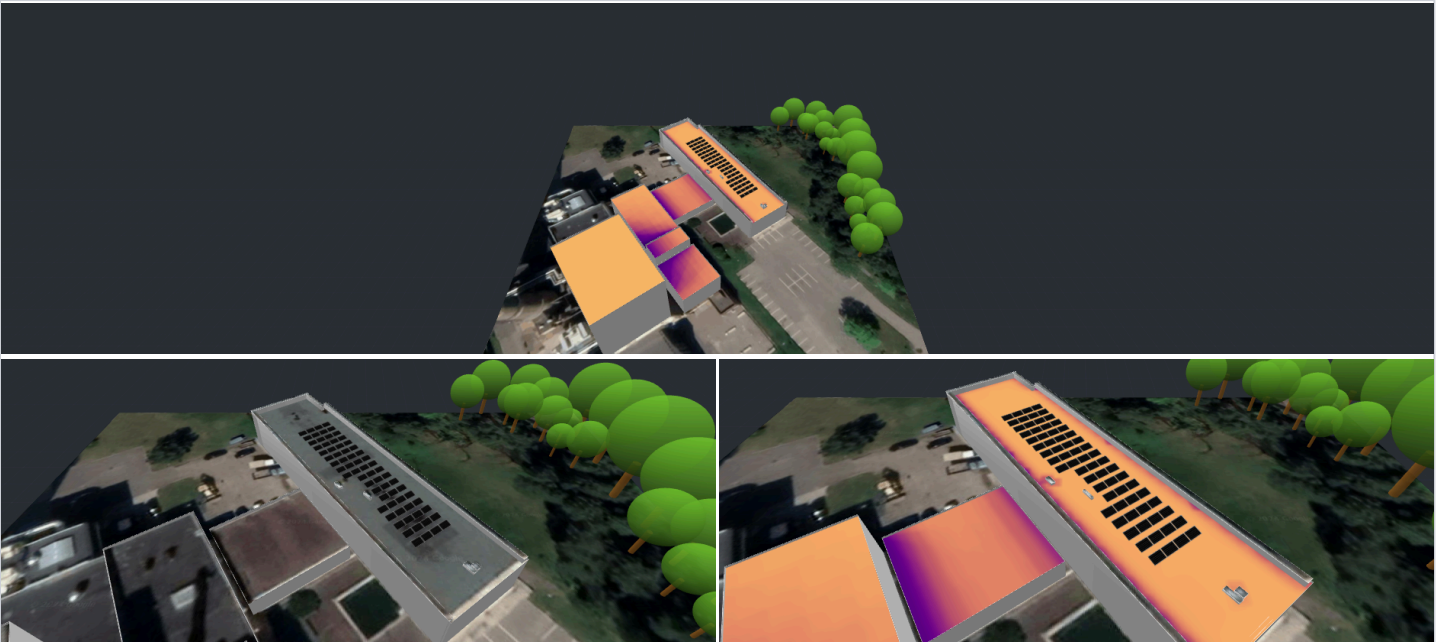


LITESKO DRUSKININKAI

Pramonės gatvė 7, Druskininkai, 66443, Lithuania | Apr 17, 2024



SYSTEM OVERVIEW

 68 PV modules

 1 Inverter

 68 Optimizers

SIMULATION RESULTS



Installed DC Power
29.58 kWp



Max Achieved AC Power
25.00 kW



Annual Energy Production
29.17 MWh



CO2 Emission Saved
(Annually)
525.1 kg



Equivalent Trees Planted
(Annually)
24



Max Achieved DC Power
27.96 kW



DC/AC Oversizing
112 %



Max Active AC Power
25.00 kW



Performance Ratio
91 %



Performance Index
986 kWh/kWp

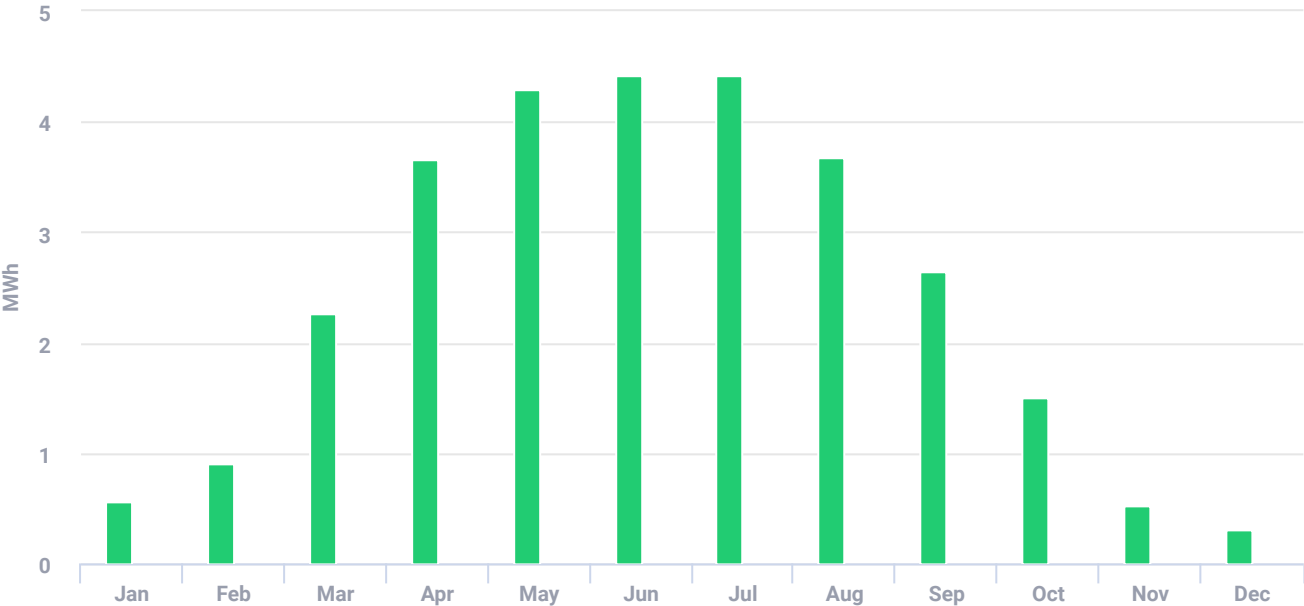
LITESKO DRUSKININKAI

Pramonės gatvė 7, Druskininkai, 66443, Lithuania | Apr 17, 2024

ESTIMATED MONTHLY ENERGY

Solar Production

Clipped Energy



Total clipped energy: 0.04%

PV MODULES

# Module	Model	Peak power	Racking type	Orientation	Azimuth	Tilt
68	Jollywood (Taizhou) Tecnologia Solar S.A., JW-HD108N-435 Black Series (user-defined)	29.6 kWp			145°	15°
Total:	68	29.6 kWp				

LITESKO DRUSKININKAI

Pramonės gatvė 7, Druskininkai, 66443, Lithuania | Apr 17, 2024

SIMULATION PARAMETERS



LOCATION & GRID

Time zone	GMT+3 (Vilnius)
Weather station	Hrodna (Grodna) (36.36 km away)
Station altitude	120 m
Station data source	Meteonorm 7.1
Grid	400V L-L, 230V L-N



LOSS FACTORS

Near shading	Disabled
Albedo	0.20
Bi-Facial Albedo	0.30
Soiling/Snow	0%
Incidence angle modifier (IAM), ASHRAE b0 param.	0.06
Thermal loss factor U_c (const) Flush mount	20
Thermal loss factor U_c (const) Tilted	22
LID loss factor	0%
System unavailability	0%